

Michael Veegh P.E. MBA

Construction Technologies & Engineering, Inc.
P.O. Box 218 • Portsmouth RI 02871 • USA

T (001) 401-841-0623 **E** mveegh1@cox.net

W www.slipform.us

North American Agent - Gleitbau GBG



GleitbauSalzburg

"Outstanding Solutions in Formwork Engineering"



Object: SEOHAE GRAND BRIDGE-GENERAL PIERS+PYLONS

Country: South Korea

Year of execution: 1998/99

Client/General Contractor: Jinsung Construction Co. Ltd.

Type of work: **SLIPFORMING +
HEAVY LIFTING OF CROSSBEAM**

Basic data:

Height: general piers: 30,0 – 50,0 m
2 nos pylons (conical): 1 x 187,0 m / 1 x 185,0 m

Weight: approx. 1.000 ton per crossbeam

Michael Veegh P.E. MBA

Construction Technologies & Engineering, Inc.
P.O. Box 218 • Portsmouth RI 02871 • USA

T (001) 401-841-0623 **E** mveegh1@cox.net

W www.slipform.us

North American Agent - Gleitbau GBG



"Outstanding Solutions in Formwork Engineering"



Object: SUEZ CANAL BRIDGE - PYLONS

Country: Egypt

Year of execution: 1999/2000

Client/General Contractor: Kajima Corporation

Type of work: SLIPFORM+HEAVY LIFTING
of formwork for crossbeam

Basic data:

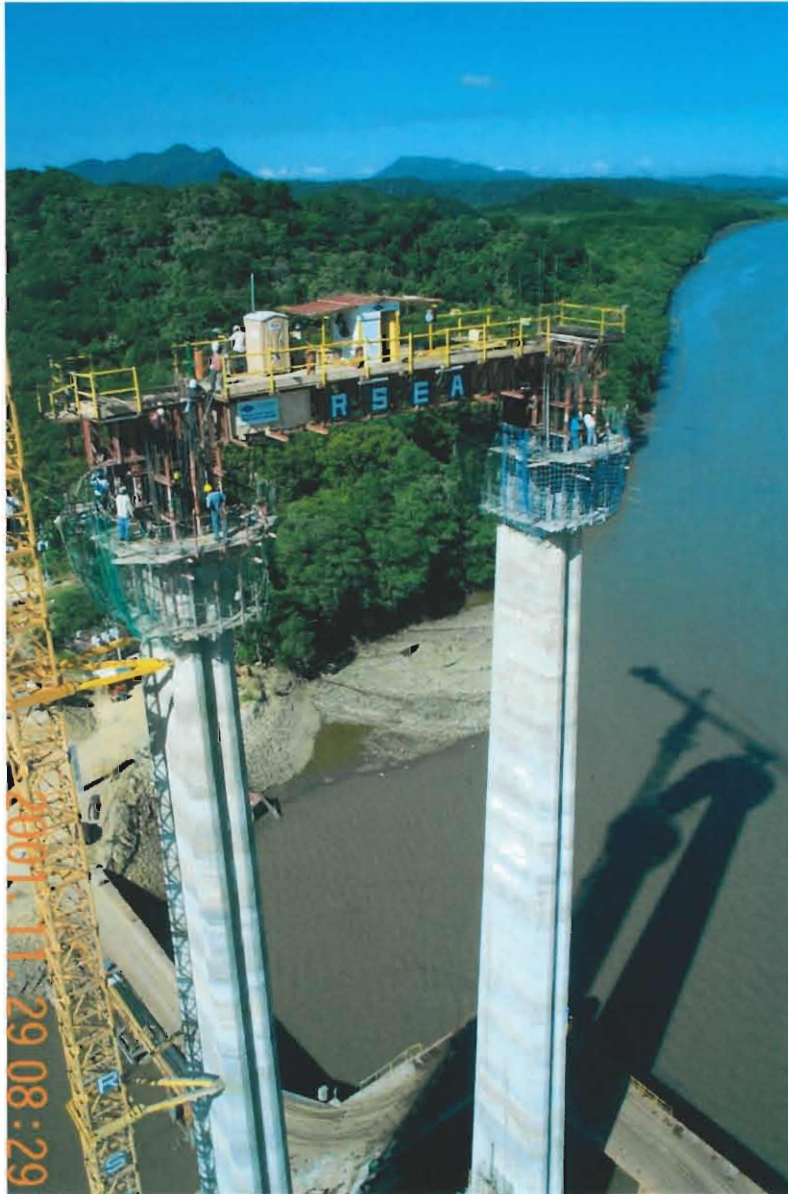
Lifting Height: approx. 65 m per crossbeam

Lifting Weight: approx. 200 ton per crossbeam

Others: 2 nos pylons: 154 m each

2 nos crossbeams per pylon

"Outstanding Solutions in Formwork Engineering"



Object: TEMPISQUE BRIDGE - PYLONS
Country: Costa Rica
Year of execution: 2001
Client/General Contractor: RSEA Engineering Corporation

Type of work: SLIPFORM+HEAVY LIFTING
of crossbeams

Basic data:
Slipform Height: approx. 76 m
Surface performed by slipform: ~ 2.500 m²
Others: the 2 legs of the pylon are inclined and conical